



# Garden Club News

## January 2017

PO Box 3253 Teaneck, NJ 07666

[www.gardenclubofteaneck.org](http://www.gardenclubofteaneck.org)

### GARDEN CLUB OF TEANECK CALENDAR JANUARY 2017

**Saturday, January 7, 2017, 10 AM:** Meeting of the Garden Club of Teaneck at the Greenhouse.

**Saturday, February 4, 2017, 10 AM:** Meeting of the Garden Club of Teaneck at the Greenhouse. Seed Exchange will follow the meeting.

**Thursday, February 9th, 2017, 7 PM:** Garden Club of Teaneck. Rodda Center, Refreshments, 7 PM. Announcements: 7:20 PM. At 7:30, Pat Libutti will speak on "The A to Z of Culinary Herbs."

Garden Club Lectures, Bergen County: Check the Master Gardeners of Bergen County Meetings and Events page ([mgofbc.org](http://mgofbc.org)), which has other garden clubs' events and lectures.

### Seed Exchange in February and March

Pat Libutti & Robin Jackson

Do you have seed packets from last year? Harvested some yourself? Some new ones to divvy up? You are just in time -- National Seed Swapping Day is the last Saturday in January.

On February 4th, two days after the Groundhog has been acknowledged, GCT will host a Seed Exchange in the Greenhouse. It will be hosted again in March.

Look for an email in January with the details. Come, talk garden talk, and save money on seeds.

### GCT MEMBERSHIP

Welcome 2016-17 members! We are 70 strong this year, including 11 new members. Here's to a fruitful, flower-full, herb-full and veggie-full year for all.  
---Peggy Hazard, Vice President, Membership



### A Letter from Robin Jackson, GCT President

Happy New Year, GCT Members!

Looking forward, there are a lot of interesting and important activities for members to participate in during the upcoming months to help GCT fulfill its objective to spread the knowledge of gardening throughout our community. At the top of the list is working cooperatively to help grow strong and beautiful plants for our plant sale and the Hawthorne School program! We are gearing up to have a great sale. Please give the directors and group leaders your full support.

In February and March, we will host a seed exchange for members. We will take a little time to learn about seed management and share our experiences in growing plants from seed. Just as exciting, we will have the opportunity to get rid of seeds we don't want in exchange for seeds we do. Please see Pat Libutti's message for more information on the seed exchange.

There is some administrative work to be done as well. We'll discuss those items at our upcoming business meetings held on the first Saturday of the month.

Thank you all for making the Club an interesting and meaningful organization. I want to particularly give thanks to the 2015/2016 and current Executive Committee members for their hours of commitment to the work of the Club. Thank you to the holiday party committee for hosting a fabulous 2016 party. The food, music, and camaraderie among members were a real treat. Also, thank you to the Skyland Holiday Room team for designing "A Room with a View" – it was gorgeous.

Wishing you a healthy and prosperous 2017!



**Report from  
Len Schwartz,  
Greenhouse Director**

We made it through! The shortest day of the year has passed. From now, each day is an itsy-bitsy bit longer. It is no matter that winter has just started and every day has a chance of being a whole lot colder.

The following is what's up in the Greenhouse:

1) **Maintenance.** There is nothing new to report about the problem of strengthening our twelve most rusted columns in need of substantial repair. We are still waiting for the town engineer to approve our proposed remediation plan or to recommend something else. In the meantime, the Wednesday group has painted and protected six of the twenty-six less-compromised columns from further deterioration and will continue doing this as an ongoing project.

We are working on improving the lighting over the seeding beds. One of our heaters is being repaired by the town. Our goal is to maintain a minimum nighttime temperature of 55 degrees.

2) **Benches.** We will miss Jan Silverstein who has resigned from the Greenhouse. We will have a drawing for her bench and any other free benches at the end of our Saturday, January 7th general meeting. Those who can't make the meeting may ask an attendee to represent them at the lottery.

3) **Group Attendance and Upkeep.** We have not yet put up the attendance sheets that leaders use to keep the attendance for their group, but these will be up by the start of 2017. Please be conscientious in doing your group's Upkeep assignment.

4) **Plants and the School Program.** Each work group should be making about 100 plants for the Hawthorne School program. A total of about 800 plants is needed. Please use signage for these plants.

Thank you,  
Len



**From the  
Desk of the  
Horticultural Director  
Doug Raska**

*Guest Columnist  
Pat Libutti*

The essence of "Room with a View" would never have come forth without the leadership of Robyn Lowenthal and Doug Raska, who led the design and production of the project. Dania Cheddie, MGBC volunteer leader at Skylands, helped to get us involved with the Open House. Thirty-three percent of our members gave of their time, talent---and plants.

**Plants:** Jerry Limone donated the Cypress, Gaultheria, and a Lime tree. Plants were lent by Denise George, Rocco D'Angelo and Sarah Jones.

**Transportation/Set up:** Phil Brown, Mark Fromm, Pat Fromm, Stella Franco, Bob O'Brien, Len Schwartz, Carmin Costa, and Olga Newey.

**Ornaments:** Stella Franco, Danielle Brooks, Robyn Lowenthal, Olga Newey, Pat Fromm, and Pat Libutti.

**Publicity and Photos:** Pat Fromm, Aura Alitieri, Dania Cheddie, Robyn Lowenthal, Doug Raska, and Pat Libutti.

**Docents:** Pat Fromm, Olga Newey, Laurie Ludmer, Victor Thomas, Yuan Hui Liu, Anna Kurz, Anne Ediger, Robin Jackson, Annemarie Papa, Stella Franco and Aura Altieri.

**GCT COMMUNICATIONS**

**Garden Club Newsletter:** January 2017 Editor: Patricia O'Brien Libutti. Proofs: Anne Ediger, Bruce Libutti. Masthead logo: Marty Steeil. Graphics: Anna Kurz. Publication: 1st of the month, September-June. Article deadline: 22nd of the previous month. Article length maximum: 1 column (265-270 words.) Email contributions to the Editor, libutti@gmail.com, by the 22nd of the month before publication. Archive: <http://www.gardenclubofteaneck.org>

**Garden Club of Teaneck website.** Webmaster: Anna Kurz. <http://www.gardenclubofteaneck.org>

**GCT on Facebook:** Page administrator: Denise George. <http://www.facebook.com/gardenclubofteaneck/>

## Skylands Holiday Open House: The Back Story

Robyn Lowenthal

Sometime back in March 2016, Doug and I visited Skylands Manor to take a closer look at the Breakfast Room. We saw Italian marble floors and walls, a 16th century Venetian lavabo (used for ritual hand washing by the priests), a light fixture that had been, in its former life, used in a funeral parlor, and a magnificent view down through the formal gardens of the NJBG.

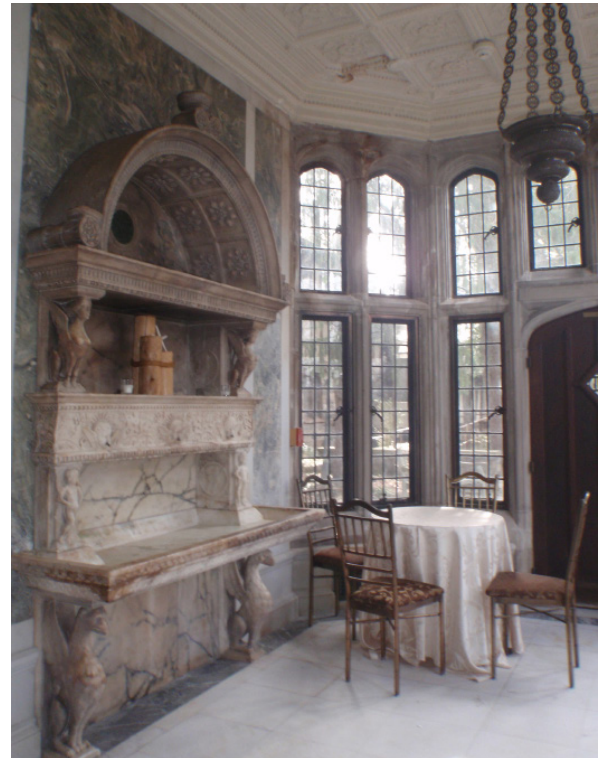
After some conversation, Doug suggested basing our room décor on the E.M. Forester novel *A Room with a View*. In the novel, based in the Edwardian period, an English woman takes a holiday in Italy – Florence and Rome – where she learns much about life and love. We decided, because we are a Garden Club, to use as much live plant material as possible, especially plants that would be found in Italy, and ornaments made from natural materials. With a little help from our friends, we had access to citrus, bay, cypress, curry, ivy, plectranthus, fig, spruce, stromanthe, strobilanthus, oleander, myrtle, pine, rosemary, and flowering plants, including begonia, cornflower, cyclamen, Christmas cactus and poinsettias.

Because Mr. Lewis, the builder and resident of the Manor, regularly filled the lavabo with fresh flowers, our first task was to create a lush floral landscape in the lavabo. Since it had been a fountain, a primary goal was to create a water feature in the lavabo. The placement of other plants in the room was created to allow visitors a view down into the gardens. Decorations on the trees again focused on all things Italian – citrus, angels and putti, pine cones, and postcards of Italy.

To add to the cultural interest, we displayed a precipio, a miniature garden with a manger, dwarf myrtle trees and Italian cars, La Befana, a table set for tea, New Year's crackers (the protagonist in the story was a Brit) and had Italian music playing to enhance the atmosphere.

Although I am a harsh critic of my own work, I would do nothing different if we were to recreate our room; it was magnificent. Many thanks to all the GCT members who were involved in our first participation in the Skylands Holiday Open House. We could not have done it without you.

To view a quick tour of the Room (1:29 minutes), click on: [urbanherban.blogspot.com](http://urbanherban.blogspot.com): *The Room With a View: Horticultural Art at Skylands by GCT* (the first post.) Or click on the link below:  
<https://animoto.com/play/1En4LSUIECv5KbN0RTIGDQ>



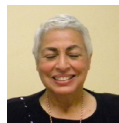
TRANSFORMATION OF THE SKYLANDS  
BREAKFAST ROOM INTO  
"ROOM WITH A VIEW"

*Skylands Manor Breakfast Room lavabo without floral decoration, above, and with plants, below (Glacier ivy, Angel wing begonia, Monterey cypress, Vick's plant, Cyclamen, Curry plant, Poinsettia, Bay laurel and Stromanthe.)*

Photos: Robyn Lowenthal, Pat Fromm.







## HAWTHORNE SCHOOL PROGRAM

Olga Newey

### WHAT ARE THE STUDENTS DOING?

The Hawthorne School program lessons are divided into 3 parts of approximately 20 minutes each. 1. Introduction, agenda, lesson. 2. Activity: sow seeds or propagate, review. 3. Plant sale. All lessons are in the school science curriculum and meant to enrich it. As much as we try to make the lessons fun and interesting, they really want to buy plants.

**Kindergarten: “Kitchen Gardening.”** I have information about making green onions, lemongrass, leeks, fennel, celery, etc. by putting parts of those vegetables in water. I have to do it first to show them. Explain the purpose of a greenhouse.

**1st grade: “The Life Story of a Seed.”** We show different kinds of seeds. We explain with diagrams and charts the parts of a seed (embryo, cotyledons, seed coat, their functions). Show a lima bean in different stages of growth. Show different seeds with pictures of mature plant and, if possible, the plant. We imagine we are seeds and we grow. Have children choose 4 seeds and sow them.

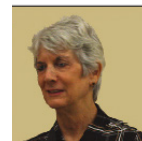
**2nd grade: “The Parts of a Plant and Their Function.”** Have vegetables on table in the form of a plant, i.e., carrots and beets for roots, celery for stem, lettuce for leaves, cauliflower or broccoli for flower. Discuss by demonstrations and diagrams the different parts of a plant and their functions. Let students taste vegetables.

**3rd grade: “Propagation.”** Have plants on tables. Explain and demonstrate different methods of propagation: plantlets (spider plants), stem, leaf, division, and seed. Discuss these methods and have students choose which method to try. Each plant on the table can be used for this. They get to take these home.

**4th grade: “The Oak and the Acorn.”** The importance of oak trees to Native Americans. Facts about oaks and acorns. Students do an experiment to see if acorns are suitable for food. Show different stages of oak tree growth from seed to maturity.

## Take the Bergen County Parks Survey

Miriam Taub



The Rutgers Center for Urban Environmental Sustainability (CUES) wants to hear from you. CUES is leading a project team — on behalf of the Bergen County Parks Department — that will analyze existing strengths, programs, and opportunities as well as future active and passive recreational options for each of the county’s park properties.

This analysis will consider how the various county parks can best be integrated into the overall Bergen County open space and recreational context. Demographic and economic trends will be considered to meet future needs of Bergen County residents.

Visit the CUES website at <http://cues.rutgers.edu/bergen-park-system/> and take the online survey to tell the CUES team what you think. You also can express your opinion by attending any of six public meetings scheduled in January to discuss the Bergen County parks system as it exists now and in the future. The first of the six meetings will be at the Rodda Center on Tuesday, Jan. 10 from 7-9 PM.

For the complete meeting schedule, go to [http://cues.rutgers.edu/bergen-park-system/pdfs/Parks\\_flyer.pdf](http://cues.rutgers.edu/bergen-park-system/pdfs/Parks_flyer.pdf).



OVERVIEW OF “ROOM WITH A VIEW”

DEC. 1-4, 2016

Photo: Aura Altieri



# Garden Club of Teaneck 2016 Annual Holiday Party



The annual GCT Holiday Party, held at the Rodda Center, was “catered” by the members (potluck) and showcased members’ culinary talents and imagination.

Among the dishes and desserts offered were:

1. home-made bread
2. chili
3. spiral ham
4. ribs
5. green and other salads
6. babka
7. apple pie
8. fruit salad

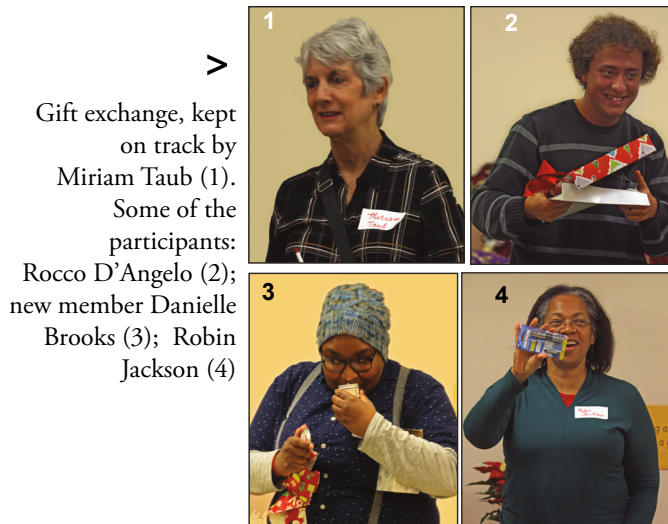


9 Christina / 10 Peggy / 11 Elyse / 12 Pat Fromm

What appears to be Number Runners are, in fact, Elyse (*left*), Pat (*ctr*) and Robyn (*rt*) adding proceeds netted by the successful tricky tray Elyse ran.



Apologies to those of you who attended but are not included in these photos.



> Gift exchange, kept on track by Miriam Taub (1). Some of the participants: Rocco D'Angelo (2); new member Danielle Brooks (3); Robin Jackson (4)



> 5/Pat Libutti  
6/Stella Franco  
7/Anne Ediger with Edna D'Angelo behind her 8/Dr. Ron McKay

**Têtes-à-têtes:** 13, Robyn and Doug/ 14, Joe and his wife; 15, Sara and Danielle / 16, GCT Hunks Lou and Joe/ 17, GCT Hunks Dauphins Peter and Len

